

Quick Installation, Neat finish and Hygienic

Capco toilet partitions are stabilised with 25mm aluminium transom Sections.

In order to prevent gaps between uneven tiles and walls the partition and pilasters are fixed to the walls with aluminium receiving channels which are fixed to the wall or tiles. The end partition or Pilaster - All complete with aluminium surround channels are then slotted into the full height receiving channels and fixed plumb.

The Partitions are fixed 151mm above the finished floor level to allow for easy cleaning.



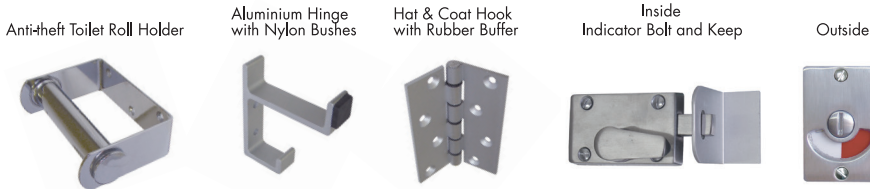
Benefits of Using Capco Toilet Products

- Easy to install
- Neat and hygienic
- Easy to clean
- Pilasters off floor surface
- Economical
- Durable
- Variety of colours

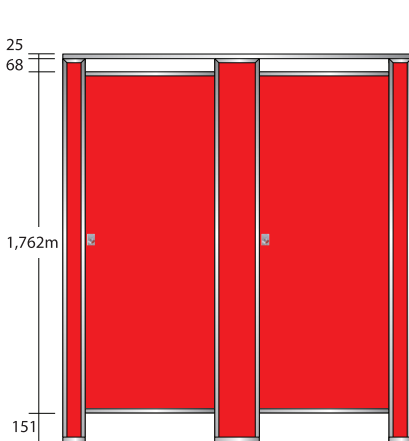
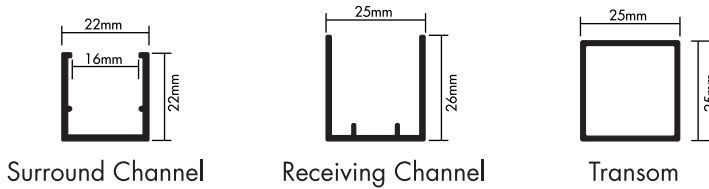
Isometric View



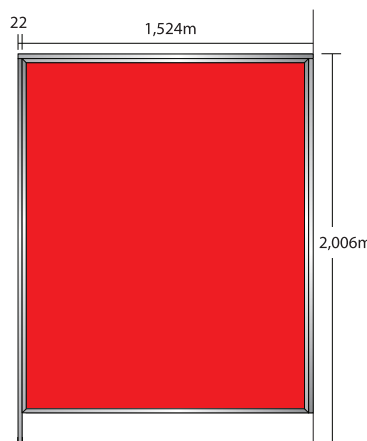
Specifically Designed for Maximum Durability with an easy Installation



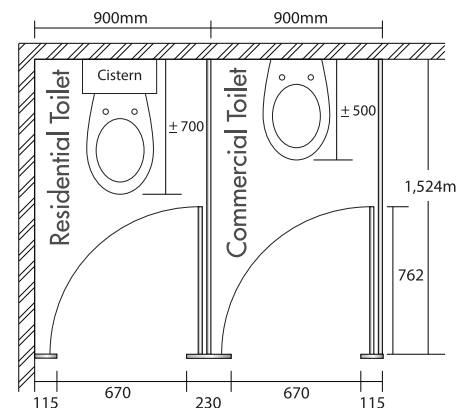
Capco toilet partition aluminium sections



Front Elevation



End Elevation



Plan View