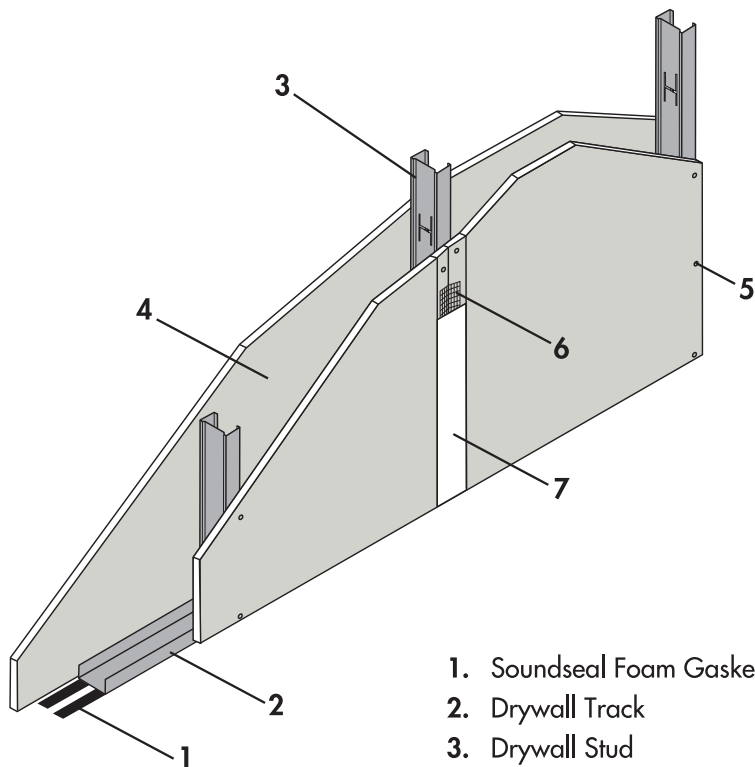


76MM OR 90MM BETA DRYWALL SYSTEM

Assembly



1. Soundseal Foam Gasket (Optional)
2. Drywall Track
3. Drywall Stud
4. Capco Standard Plasterboard
5. Drywall Screws
6. Capco Fibre Tape
7. KNAUF Jointing Compound

Panelling

12mm tapered edge CAPCO Plasterboard. Staggered joints
25mm drywall screws at 230mm centres. 50mm wide self-adhesive fibreglass jointing tape. KNAUF jointing compound. Soundseal for Acoustic performance.

Steel Framework

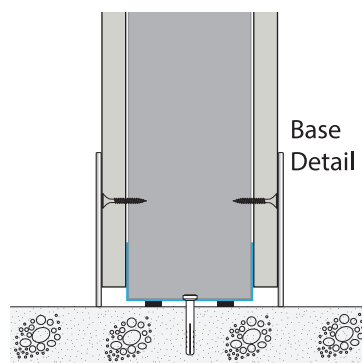
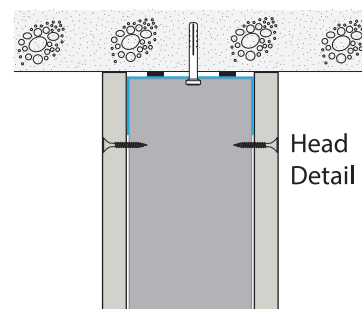
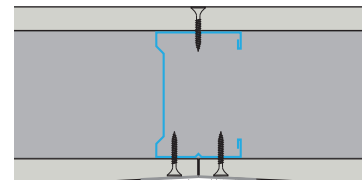
Studs: 51 x 32 x 0.5mm or 63.5 x 32 x 0.5mm
Head Track: 52 x 25 x 0.5mm or 65 x 25 x 0.5mm
Floor Track: 52 x 25 x 0.5mm or 65 x 25 x 0.5mm
Spacing: 600mm Centres

Performance

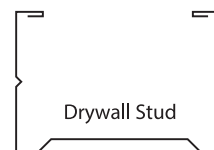
Fire: 30 Minute Fire Rating
Sound Insulation: 76mm: 39dB 90mm: 42dB (OPINION)
Maximun Height: 76mm: 4.200m 90mm: 4.200m

Section

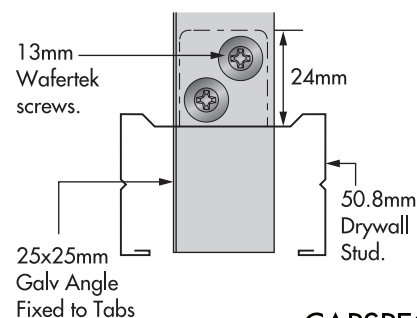
Joint Detail



Components

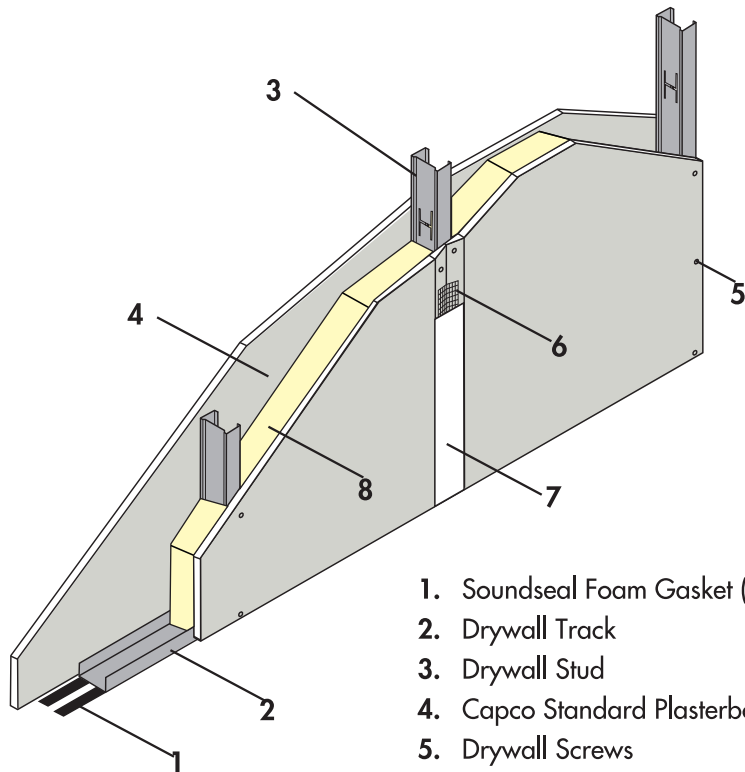


Bridging Detail



76MM OR 90MM BETA DRYWALL SYSTEM

Assembly



1. Soundseal Foam Gasket (Optional)
2. Drywall Track
3. Drywall Stud
4. Capco Standard Plasterboard
5. Drywall Screws
6. Capco Fibre Tape
7. KNAUF Jointing Compound
8. Knauf Acoustic Batt

Panelling

12mm tapered edge CAPCO Plasterboard. Staggered joints
25mm drywall screws at 230mm centres. 50mm wide self-adhesive fibreglass jointing tape. KNAUF jointing compound. Soundseal for Acoustic performance.

Insulation

63mm Thick Knauf Acoustic Batt - 13kgs/m³ density or

Steel Framework

Studs: 51 x 32 x 0.5mm or 63.5 x 32 x 0.5mm

Head Track: 52 x 25 x 0.5mm or 65 x 25 x 0.5mm

Floor Track: 52 x 25 x 0.5mm or 65 x 25 x 0.5mm

Spacing: 600mm Centres

Performance

Fire: 30 Minute Fire Rating

Sound Insulation: With Knauf Acoustic Batt

76mm: 43dB 90mm: 46dB (OPINION)

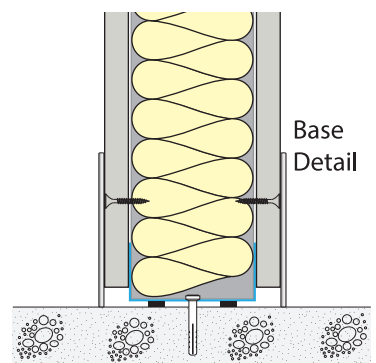
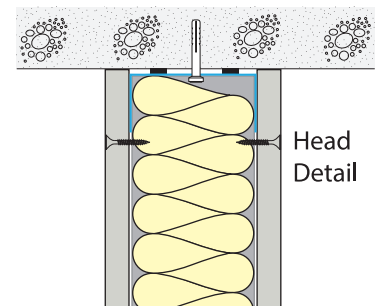
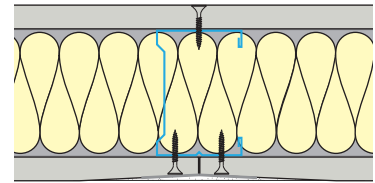
With Capco Ultrasonic Batt

76mm: 45dB 90mm: 48dB (OPINION)

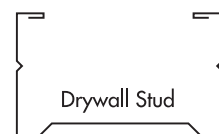
Maximun Height: 76mm: 4.200m 90mm: 4.200m

Section

Joint Detail



Components



Bridging Detail

