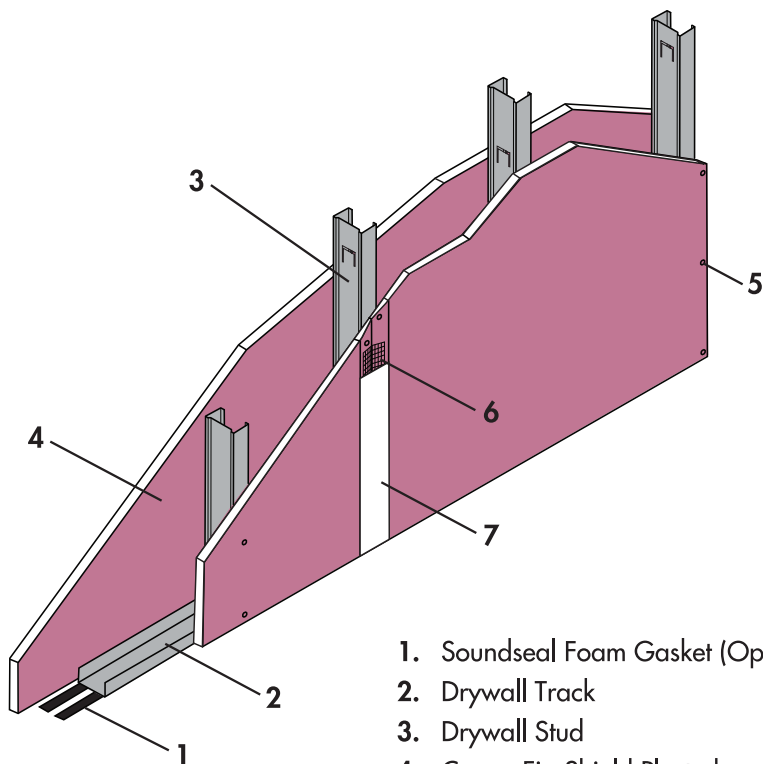


95MM BETA DRYWALL SYSTEM

Assembly



1. Soundseal Foam Gasket (Optional)
2. Drywall Track
3. Drywall Stud
4. Capco FireShield Plasterboard
5. Drywall Screws
6. Capco Fibre Tape
7. KNAUF Jointing Compound

Panelling

CAPCO 15mm FireShield board on either side of framework.
 Staggered joints. 25mm drywall screws at 230mm centres.
 50mm wide self adhesive fibreglass jointing tape. KNAUF jointing compound. Soundseal for acoustic performance.

Steel Framework

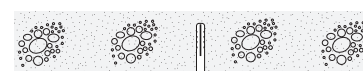
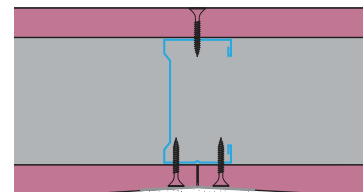
Studs: 63.5 x 32 x 0.5mm
Head Track: 65 x 25 x 0.5mm
Floor Track: 65 x 25 x 0.5mm
Spacing: 400mm Centres

Performance

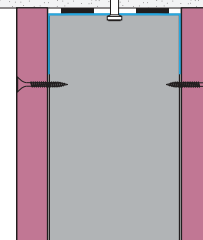
Fire: 60 Minute Fire Rating
Sound Insulation: 42dB (OPINION)
Maximum Height: 4.200m

Section

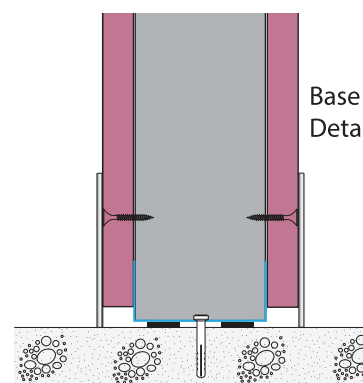
Joint Detail



Head Detail



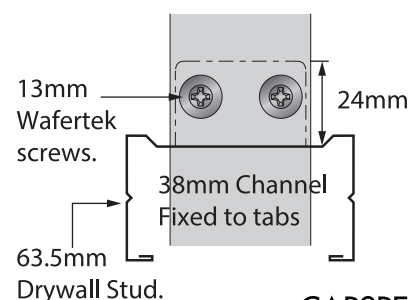
Base Detail



Components

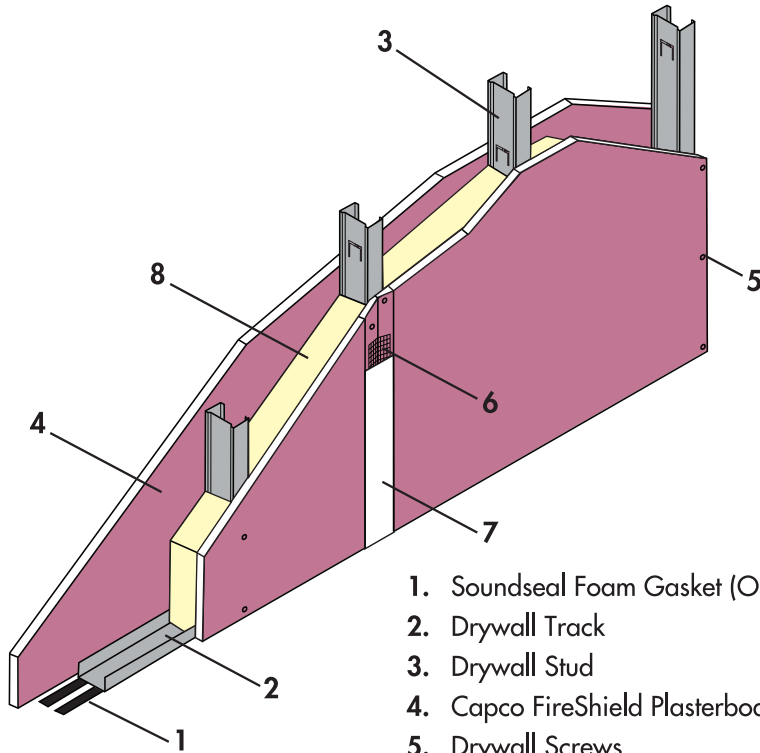


Bridging Detail



95MM BETA DRYWALL SYSTEM

Assembly



1. Soundseal Foam Gasket (Optional)
2. Drywall Track
3. Drywall Stud
4. Capco FireShield Plasterboard
5. Drywall Screws
6. Capco Fibre Tape
7. KNAUF Jointing Compound
8. Cavity Batt Insulation (shown in image) or Ultrasonic Batt

Panelling

CAPCO 15mm FireShield board on either side of framework. Staggered joints. 25mm drywall screws at 230mm centres. 50mm wide self adhesive fibreglass jointing tape. KNAUF jointing compound. Soundseal for acoustic performance.

Insulation

50mm Thick Ultrasonic Batt - 47.5 kgs/m³ density or
63mm Thick Cavity Batt - 14kgs/m³ density

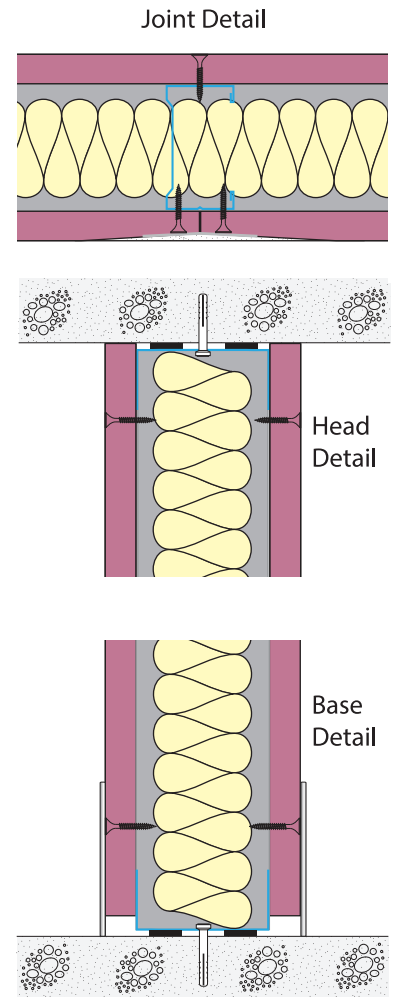
Steel Framework

Studs: 63.5 x 35 x 0.5mm
Head Track: 65 x 30 x 0.5mm
Floor Track: 65 x 30 x 0.5mm
Spacing: 400mm Centres

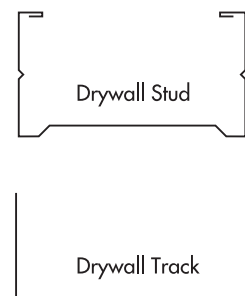
Performance

Fire: 60 Minute Fire Rating
Sound Insulation: With Cavity Batt: 49dB (OPINION)
With Ultrasonic Batt: N/A (OPINION)
Maximun Height: 4.200m

Section



Components



Bridging Detail

