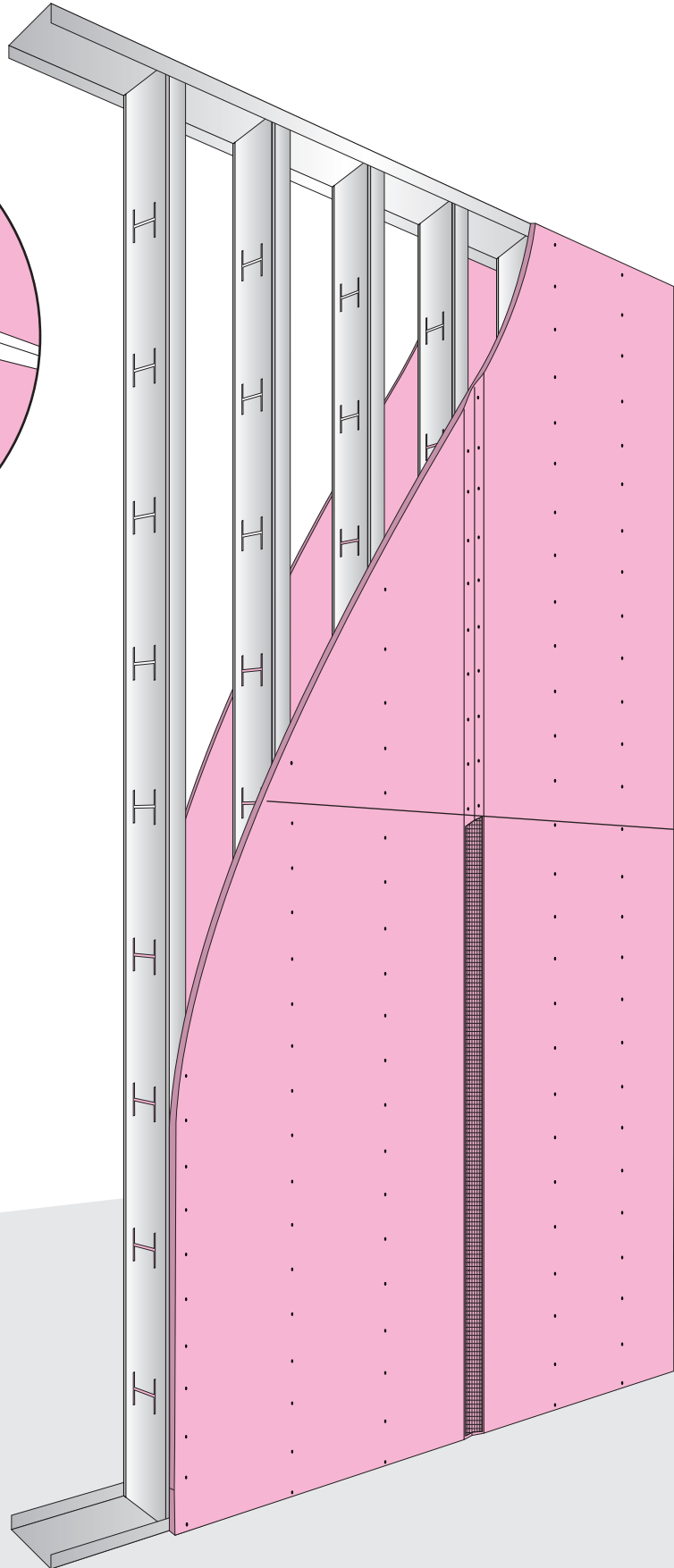
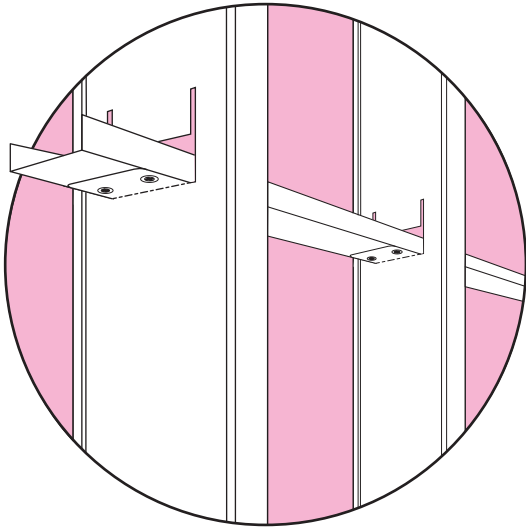


BETA

DRYWALL SYSTEM

HI-WALL SYSTEM: 6M





HI-WALL SYSTEM: 6M HIGH

102mm Steel Stud & 103mm Steel Track

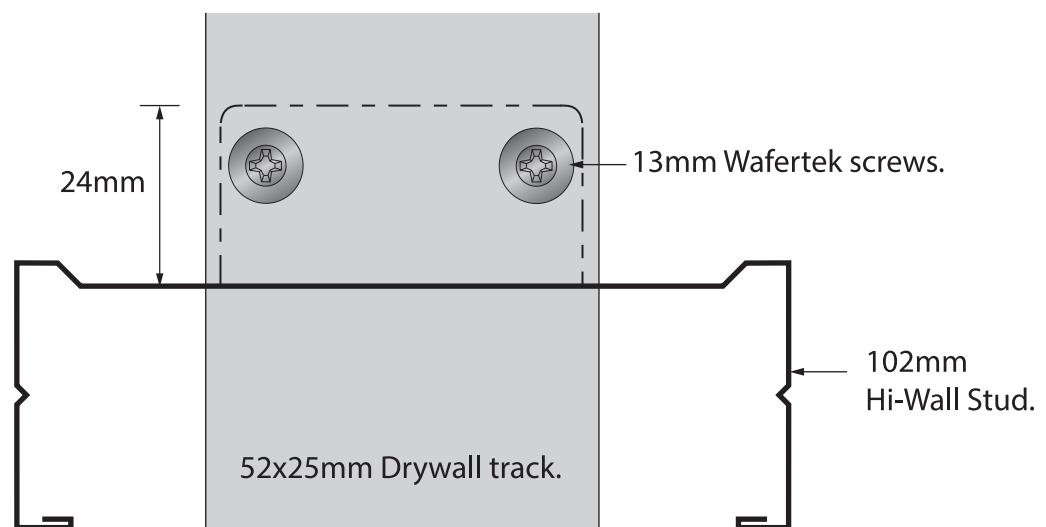
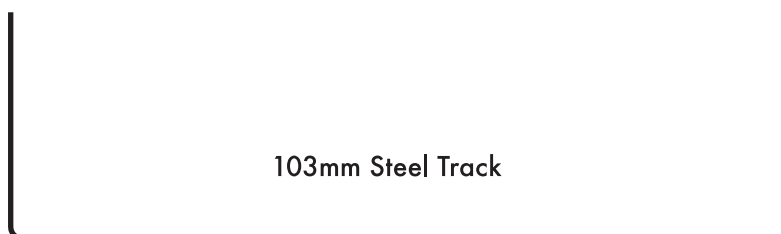
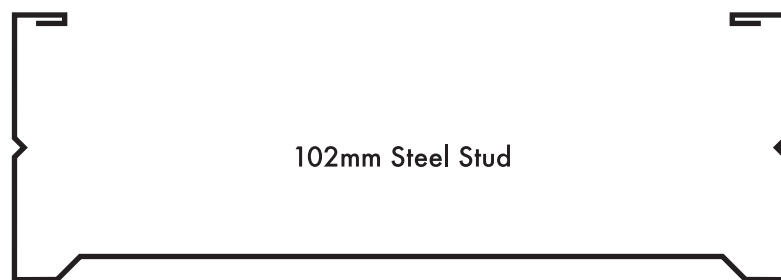
CAPCO HI-WALL SYSTEM 6M HIGH

Vertical Studs: 102 x 35 x 6.5 x 0.6mm at 400mm centres

Top & Bottom Tracks: 103 x 30 x 0.6mm

Horizontal Noggings: 52 x 25 x 0.5mm at 2.400m centres.

Boarding: 15mm tapered edge "FireShield" gypsum board fixed to each side of partition. Staggered joints.



Bridging Detail